

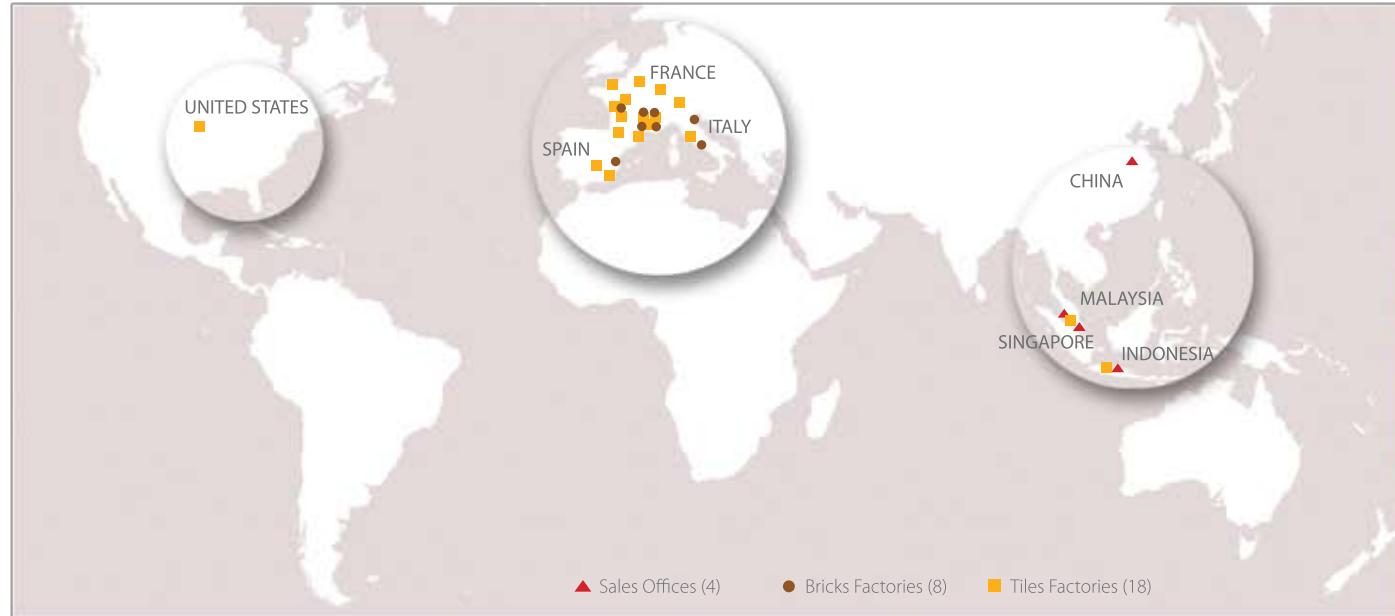
# TBF CLAY ROOF TILES



# Minimalist Series



# Covering the World in Beauty for Over 150 Years



Terreal Malaysia Sdn. Bhd. is one of the leading producers of clay roofing tiles in Malaysia. We are part of the Terreal Group, a renowned terracotta roofing tiles manufacturer with over 150 years of experience and a total of 26 plants worldwide. Currently we have one plant located in Kluang, Johor which started operation in 1996. In 2008, we have expanded to become the largest clay tiles producer in Southeast Asia in terms of production capacity. To ensure consistent production of first-rate high quality tiles, we employ the latest Italian and French technology. Under our group, Terreal carries the most prestigious terracotta brands in the world which include TBF, Ludowici, San Marco, Guiraud and Lambert.



## Modern, Elegant and Distinctively Clay: A Class above the Rest

With its latest Minimalist Series, Terreal clay tiles offer modern colours that last forever and never fade. Cooling and 100% natural, they are made from a careful selection of pigments and minerals, fired together with the clay body at 1050°C, resulting in the production of deep rich shades of natural yet modern colours. Compared with alternative roofing materials like asphalt shingles or concrete flat tiles, Terreal clay tiles are many times better suited for tropical climates. With pitches as low as 20 degrees without under roof, our profile provides perfect ventilation and water tightness. Within the Terreal Minimalist Series, there are 6 colour schemes designed to complement modern and contemporary architecture.



# Natural Colours Nurtured Into a Unique Brand of Beauty

Terreal gives you a stunning palette of modern colours ranging from warm and minimalist Terracotta Earth colours, and soft and relaxing Neutrals to finally its Signature hues for which the Minimalist Series is well known and in demand for modern architecture.

Through careful and thoughtful selection of pigments and minerals chosen for their qualities of opacity, light fastness and durability, colours are both inspired and created by the natural environment. Easy on the eyes, elegant and modern, each of the 6 Minimalist colours has its own unique personality.







HEART-WARMING TONES • A delight for all seasons

# Sierra Red MS.1



## TERRACOTTA EARTH

A contemporary modern terracotta colour that is warm and welcoming, Sierra Red is brown with plenty of orange in it. With rich and deep golden hues that are more opaque than ochre, the earthy tones of this range bring colours into perfect harmony.

*External wall finishes in pastel shades of the latest beige blend together as ideal partners.*



SIERRA RED (MS.1)



WALL COLOUR



FEATURE COLOUR

TERRACOTTA EARTH

# Drakkar Brown MS.2

A beautiful brick red, Drakkar Brown is a shade of rich brown made with generous tints of orange red. With a touch of black added to its red hue, it is reminiscent of burnt sienna – and by night fall, it appears to be almost as red as a setting sun. This range offers a contemporary yet very tropical feel.

*Contemporary shades of burnt sienna and auburn enhance a blend of dark and milky browns.*



DRAKKAR BROWN (MS.2)



WALL COLOUR



FEATURE COLOUR





EARTHY BEAUTY • Real colours that exude understated elegance



UNIQUE BLEND • A harmony of hues to complement the environment

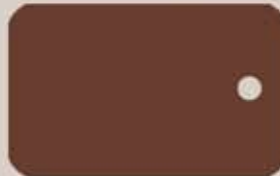
# Eiffel Brown MS.3



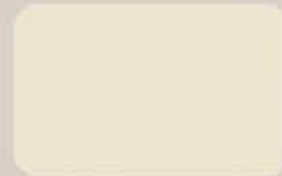
## SIGNATURE TONE

A clever mix of orange, green, pink and yellow, this versatile brown complements all other colours, with a bias towards one of the individual hues. Under certain light conditions, it is almost violet or olive, creating a dusty subtlety.

*Team with toned down greys then offset with creams and whites for balance.*



EIFFEL BROWN (MS.3)



WALL COLOUR



FEATURE COLOUR

A solid and dense colour that works to great effect, especially when used against other colours. It is deep, rich and intense, powerful like black chocolate, offering a touch of magnificence.

*Bright white trims add immense contrast to a calming palette of warm greys and neutrals.*



NOIR CHOCOLATE (MS.4)



WALL COLOUR



FEATURE COLOUR

SIGNATURE TONE

# Noir Chocolate MS.4





MYSTERIOUSLY ATTRACTIVE • Dark tones redefined under a new light



DEEP LUXURY • Smooth shades that awaken in different ways

# Graphite Black MS.5



## SIGNATURE TONE

Deep ambiguous colour that seems to have everything thrown into it. Smooth with a hint of luminous green, it will appear black under certain light conditions. A colour that is always deep and powerful, it has a trendy Zen appeal.

In all, it is sophisticated, iconic and stylish.

*Harmonize this stylish shade of black with a neutral palette from pure white to deeper neutrals.*



GRAPHITE BLACK (MS.5)



WALL COLOUR



FEATURE COLOUR

Neither warm nor cool, it is ambiguous yet versatile enough to blend with any colour. Platinum Grey is an interesting colour that changes character according to prevailing light conditions. It is a delicate greyish brown purple that comes with cusp colours in the edge of blue/green. Truly visually captivating that breaks all the rules.

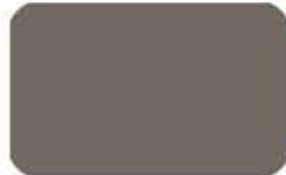
*A perfect match with warm timber browns, along with steely blues and creams through to crisp whites.*



PLATINUM GREY (MS.6)



WALL COLOUR



FEATURE COLOUR

NEUTRAL TONE

# Platinum Grey MS.6





VERSATILE NEUTRAL • Smart colours with a new kind of beauty



Romane TBF



Romane Canal TBF

## Product Information



| Type             | Dimensions (mm) | Weight (kg) | Length Batten Gauge (mm) | Effective Width (mm) | Tiles per m <sup>2</sup> (pc) | Weight per m <sup>2</sup> (kg) | Minimum Pitch* |
|------------------|-----------------|-------------|--------------------------|----------------------|-------------------------------|--------------------------------|----------------|
| Romane TBF       | 220 x 428       | 3.65        | 362 ± 2                  | 215                  | 13                            | 47                             | 19°            |
| Romane Canal TBF | 298 x 449       | 4.00        | 388 ± 2                  | 223                  | 11                            | 44                             | 19°            |

\* Depending on location and wind speed.

## Colour Range

Colour shown are indicative and should not be used for final selection, colour variation is an inherent characteristic of all kiln fire clay product. Product chosen should be ordered from an actual roof tile sample available upon request.



Sierra Red (MS.1)



Drakkar Brown (MS.2)



Eiffel Brown (MS.3)



Noir Chocolate (MS.4)



Graphite Black (MS.5)



Platinum Grey (MS.6)



TERREAL MALAYSIA SDN BHD

25, Jalan TPK 1/5, Taman Perindustrian Kinrara, Seksyen 1

47180 Puchong, Selangor, Malaysia

Tel : (603)8075 4010 / 4020 / 4060 | Fax : (603)8075 1090

<http://www.terreal.com.my>

